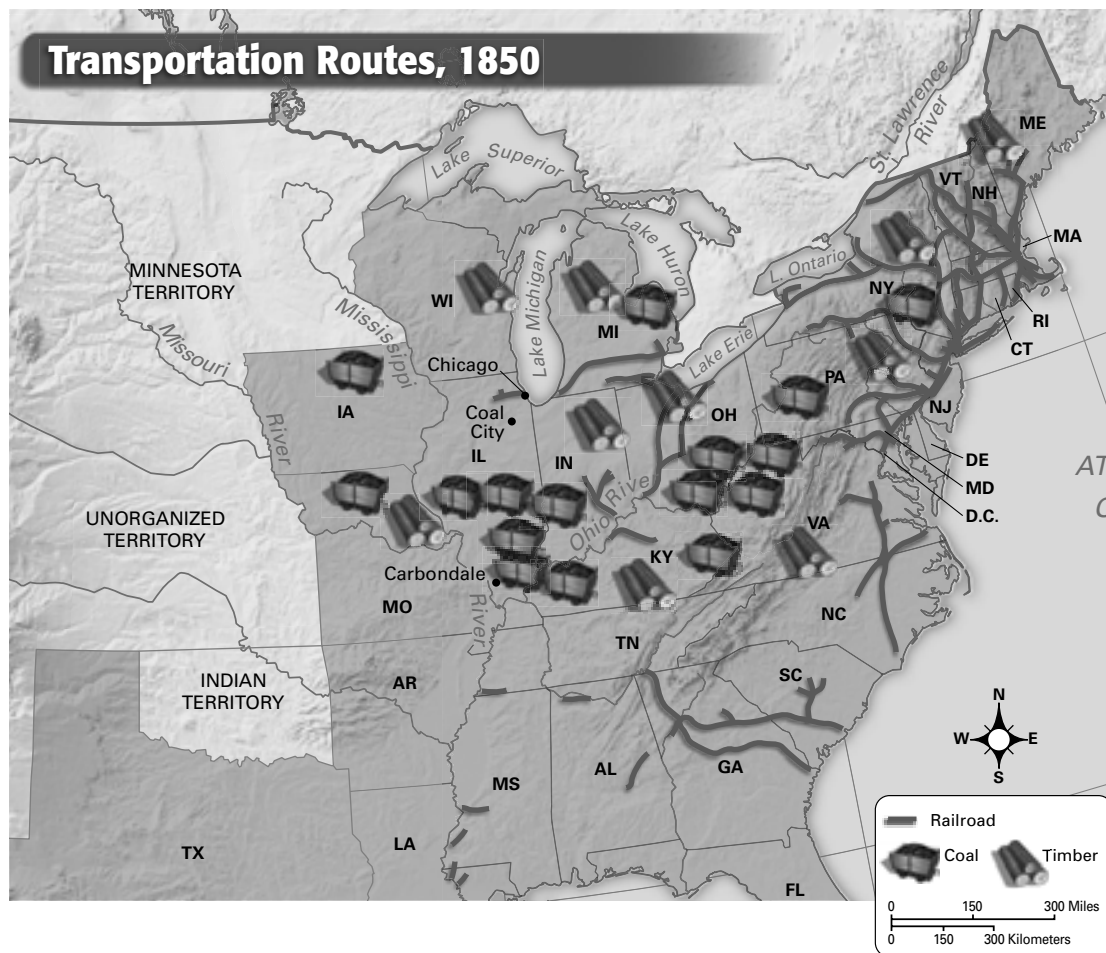


The Transportation Revolution

The railroad probably affected life in the United States more than any other invention during the 1800s. As more and more railroads were built, cities and towns sprang up along railroad lines across the country. The nation's economy grew rapidly as railroads made it easier to transport resources, such as coal and timber, from one area of the country to another. Railroads often would haul goods to ports along rivers and lakes where steamboats would take the goods and carry them farther. The map below shows major railroad routes in the United States around 1850. It also shows areas where coal and timber were found.



MAP ACTIVITY

1. Circle the areas on the map that show where coal was found.
2. Place a box around the areas on the map that show where timber was found.

3. Use a bright color to trace a railroad route that connects Massachusetts to Pennsylvania.
4. Suppose you want to build a railroad line that would make it easy to transport coal from Illinois to Texas. Use a dark color to draw the route your railroad would cover.
5. Shade the state that seems to have the most deposits of coal according to the map.

ANALYZING MAPS

1. **Place** If a train were traveling from Tennessee to South Carolina in 1850, what other state would it pass through?

2. **Region** In what part of the country were most railroads built in the 1850s?

3. **Movement** Why do you think that some railroad lines were built along the Great Lakes?

4. **Interpreting** How does the location of natural resources affect where railroads were built?

5. **Evaluating** Why do you think that it was important to transport natural resources to the East and Northeast?

EXTENSION ACTIVITY

You are riding on a train in 1850. Using the first person, write three travel journal entries to describe what you might see on your journey. Be sure to include the date on each of your entries.